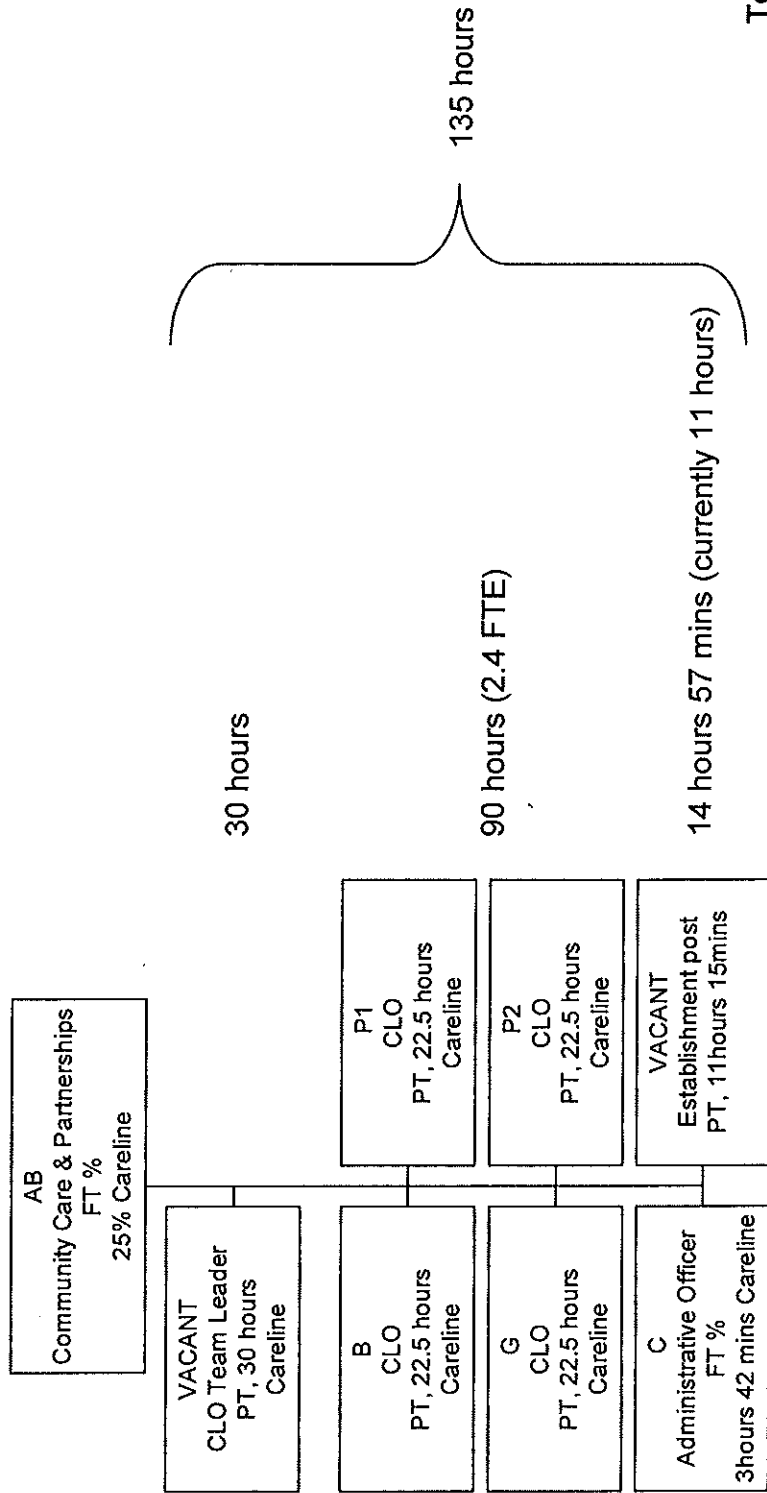


# Careline Team - Current staffing



Total available

Hours = 135 hours per week plus management

FTE posts = 3.65 plus management

Total currently in place

Hours = 101 incl temp admin plus management

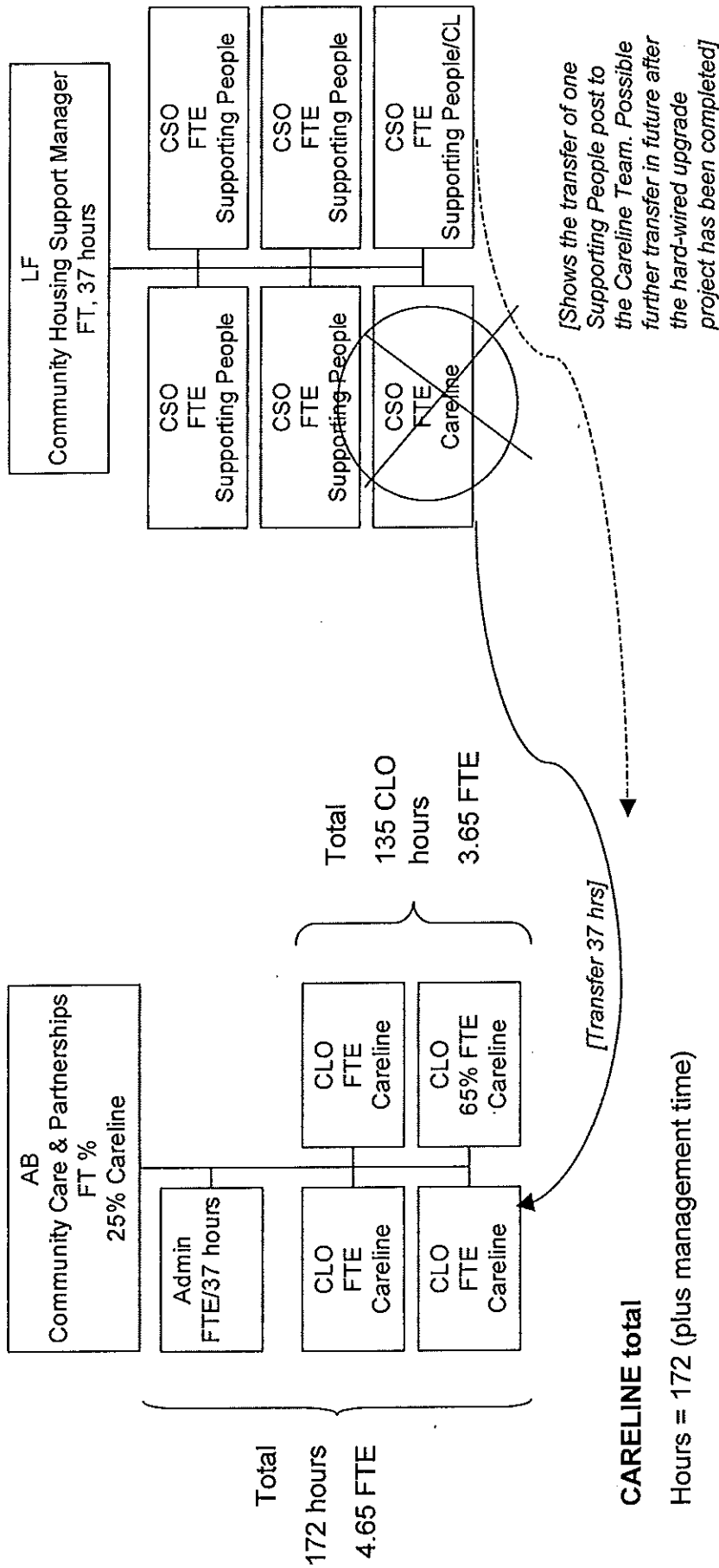
FTE posts = 2.73 plus management

Visiting staff = 90 hours / 2.4 FTE

# Option B - proposal

## Careline Team

## Supporting People Team



CSO staff currently support the installation of units in the upgrading hardwired to individual alarms project. One member of staff moves from Supporting People to Careline